



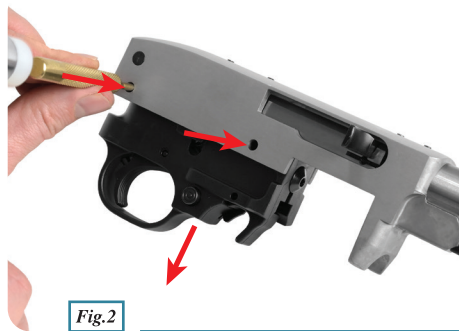
RUGER 10/22 CHARGING HANDLE Installation Guide

STEP 1

Remove barrel band and takedown screw (Fig.1). Remove receiver from stock (Fig.1a).



Safety information:
Before you begin, be certain that the gun is empty and clear.

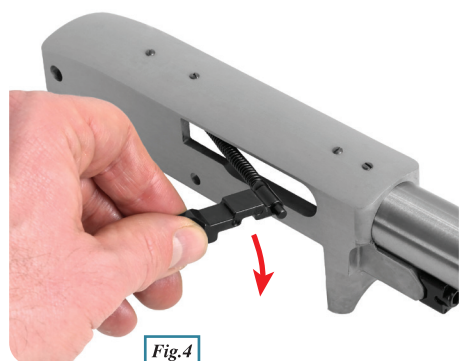
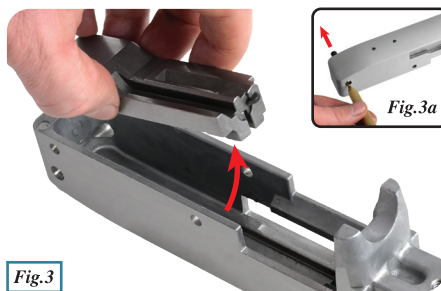


STEP 2

Remove the two smaller pins fixing the trigger assembly to the receiver. (Fig.2) then pull remove the trigger assembly downward to remove.

STEP 3

Remove the large bolt-stop pin from receiver (Fig.3a). Pull the charge handle back and remove the bolt assembly (Fig.3).



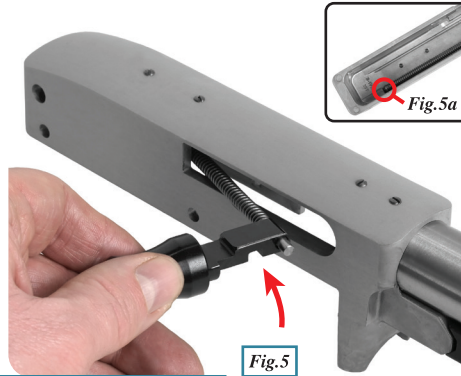
STEP 4

Pull charge handle out through the side of receiver and set aside (Fig.4).

CONT'D

STEP 5

Apply gun oil to spring and guide rod of the new charge handle and insert into the receiver, guide rod end first (*Fig.5*). Ensure the pointed end of the guide rod sits within the recess at the rear (*Fig.5a*).



STEP 6

Pull the charge handle fully to the rear so that the arm of the charge handle fits into the corresponding slot in the bolt, then slowly release the handle until it is fully forward (*Fig.6*).

STEP 7

Reinstall bolt-stop pin, then reverse steps 2 and 1 to reinstall the trigger assembly and stock (*Fig.7*). Check that charging handle operates smoothly and without obstruction. The rifle is now ready to use.



**Congratulations,
you're ready to shoot!**