



RUGER 10/22 BOLT ASSEMBLY Installation Guide

STEP 1

Remove barrel band and takedown screw (Fig.1). Remove receiver from stock (Fig.1a).



Safety information:
Before you begin, be certain that the gun is empty and clear.



STEP 2

Remove the two smaller pins fixing the trigger assembly to the receiver. (Fig.2) then pull remove the trigger assembly downward to remove.

Fig.2

STEP 3

Remove the large bolt-stop pin from receiver (Fig.3a). Pull the charge handle back and remove the old bolt assembly (Fig.3).

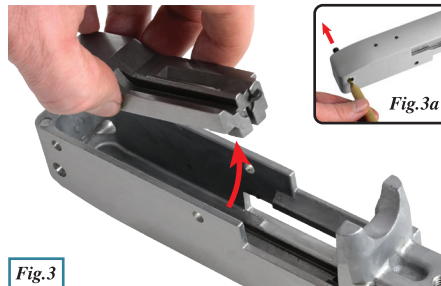
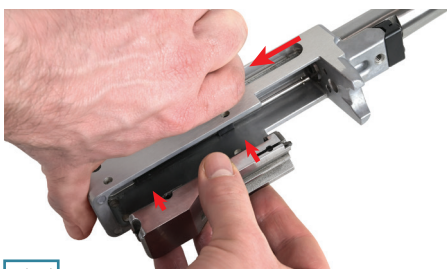


Fig.3



STEP 4

Pull the charge handle fully to the rear so that the arm of the charge handle fits into the corresponding slot in the new bolt, then slowly release the handle until it is fully forward (Fig.4).

Fig.4

STEP 5

Clean and oil receiver. Reinstall bolt stop pin, then reverse steps 2 and 1 to reinstall the trigger assembly and stock (Fig.5). Check that the action operates smoothly. The rifle is now ready to use.



Fig.5



**Congratulations,
you're ready to
shoot!**